

ROOTED NEWSLETTER

Ideas & Impact from the African Continent

- Governance
- Sustainability
- Inclusion
- African-led.

Tuesday
30/09/2025
vol.1

IN THIS ISSUE

pg 2 **Rethinking Risk Through a Gender Lens**

pg 3 **Spotlight:**
Tlamelang Special School

pg 4 **What We're Reading & Listening To**

pg 5 **Upcoming Events**

pg 5 **Call for Contributors**

SPOTLIGHT ON IMPACT

Tlamelang Special School:
Where Disability Meets Possibility

CONNECT WITH US



Welcome to Rooted

Why We're Rooted

Welcome to the inaugural issue of Rooted, our new space to share insights and ideas from the frontlines of governance, sustainability, and systems innovation across the African continent.

Rooted is born from a simple belief: that a new kind of leadership is emerging—one that is ethical, context-rooted, and fiercely committed to Africa's future.

For too long, the narrative of African development has been told from the outside. With KM Nala Advisory—and now with this publication—we are working to change that.

We want to spotlight the people and projects that are quietly, powerfully redefining what it means to build resilient and inclusive systems right here, at home.

This newsletter is for practitioners, dreamers, and doers who know that ethical leadership is not a theory—it's a commitment to transformation, from the ground up.

Here, you'll find deep dives into our research, stories from local changemakers, and reflections on how to build a future that is sustainable, just, and uniquely African.



"We shape systems by centering people." — KM Nala

"We are working to change that. We want to spotlight the people and projects that are quietly, powerfully redefining what it means to build resilient and inclusive systems right here, at home."

Let's reframe what's possible. Let's lead from the ground up.

Thank you for joining us on this journey.

Warmly,
Katlego Majola

OUR COMMITMENT

At KM Nala Advisory, our work is about more than strategy — it's about systems that serve.

Rooted reflects our ongoing commitment to elevate African voices, champion ethical leadership, and spotlight the innovations shaping the continent's sustainable future.

Join the movement.

#NalaForAfrica | #SheBreathes | #AfricanSustainability

Ideas & Impact from the African Continent



BEYOND INCLUSION: Rethinking Risk Through a Gender Lens in Africa

For decades, the language of corporate governance and risk has been dominated by data models, audits, and balance sheets. But beneath the surface of spreadsheets lies an invisible yet potent source of vulnerability: gender inequity.

In Africa—where systems are deeply entwined with cultural, communal, and informal dynamics—this blind spot becomes a strategic liability.

“We measure financial risk in numbers, but overlook the lived risks of exclusion.”



The Invisible Risks of Exclusion

Traditional risk models assume homogeneity—equal access to capital, opportunity, and safety. But that’s not the lived reality for millions of African women.

Imagine a large-scale agricultural project. A conventional risk analysis may focus on logistics and price volatility.

A gender-conscious lens, however, would ask:

- How does this impact women farmers who lack formal land titles?
- Does the shift in crop types compromise household food security?
- Are women’s safety and mobility considered in the workforce plan?



Ignoring these questions isn’t just unjust—it’s a setup for reputational, operational, and social risk.

From “A Seat at the Table” to “Redesigning the Table”

Inclusion is not enough. Gender-conscious risk is about redesigning decision-making structures to reflect lived realities.

When women are meaningfully included in risk management—especially those rooted in community knowledge—they don’t just diversify the team. They expand the very definition of what risk is.

- In finance: Risk looks different for a micro-entrepreneur with no formal collateral.
- In transport: It’s the difference between safety in daylight and danger at dusk.
- In tech: It’s about algorithms that unintentionally shut women out of opportunity.

“Gender-conscious risk is not a burden; it is a competitive advantage.”

Why It’s a Strategic Advantage

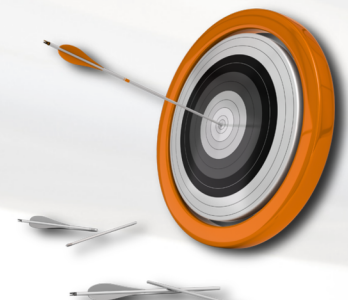
Organisations that embed this lens aren’t just more ethical—they’re more resilient, innovative, and trusted.

They can:

- Unlock innovation through underrepresented insights
- Mitigate social risk before it becomes a crisis
- Build community trust, which is crucial for social license to operate

This is not a compliance issue—it’s a future-proofing strategy.

And in the African context, it’s mission critical.



TLAMELANG SPECIAL SCHOOL: Where Disability Meets Possibility

📍 **North West Province, South Africa**

In the rural village of Gelukspan, 43km from Mahikeng, Tlamelang Special School stands as a powerful symbol of possibility. Meaning “to provide for” in Setswana, Tlamelang offers far more than education—it offers hope, dignity, and opportunity.

“We are not just educating our learners; we are nurturing their spirits, talents, and independence.”

At a glance

- 182 learners with physical disabilities, Grades 1–12
- Full-time hostel with round-the-clock care
- On-site clinic and physiotherapy department
- Three nutritious meals per day
- Curriculum includes Setswana, English, Business Studies, Accounting

Achievements

- National and international athletes in wheelchair basketball, boccia, CP soccer
- Award-winning talents in music, arts, and culture

Why it matters?

Inclusive education isn’t a luxury—it’s a right.

Tlamelang shows us what’s possible when education meets care, excellence, and belief in every learner’s potential.

Support their work, partner, or learn more:
Tlamelang Special School homepage
<http://www.tlamelangspecialschool.co.za/>



WHAT'S ON
OUR RADAR

Think.
Listen.
Act.



“The Future of Digital Governance in Africa”
— Brookings Institution

How African governments are leveraging tech for transparency and public service delivery.



“It’s Possible” — UN Climate Change Podcast

In Episode 1, astronaut and changemaker Dr. Mae Jemison reflects on her journey from space to Sierra Leone, and how innovation—when rooted in humanity—can reshape climate resilience on Earth. An inspiring conversation on science, systems thinking, and hope.



Africa Sustainable Development Report 2024 — African Union, UN ECA, AfDB, UNDP

Reinforcing the 2030 Agenda and Agenda 2063 and eradicating poverty in times of multiple crises: The effective delivery of sustainable, resilient and innovative solutions. Published: 16 July 2024
A comprehensive review of Africa’s progress on the SDGs and Agenda 2063 in the face of compounding global and regional challenges.

Upcoming Events & Announcements

Sept 2025	Panel Appearance: Caribbean Hybrid Risk Management Conference	Representing KM Nala Advisory
Dec 2025	Report Launch: Reframing Sustainability Indicators for South Africa	Pre-order Link, email us at info@kmnala.co.za
Jan 2026	Webinar: Risk & Resilience in African Governance	Register online at www.kmnala.co.za



CALL FOR CONTRIBUTORS



Got Something to Say? CALL FOR CONTRIBUTORS

At Rooted, we believe that diverse African voices are essential to reshaping systems.

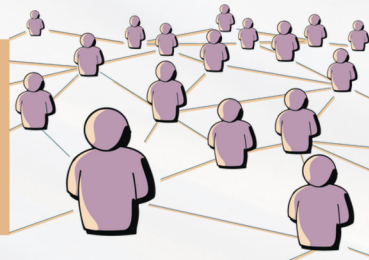
We are looking for original insights from professionals, researchers, and community practitioners who are:

- Insightful – Grounded in experience or research
- Action-Oriented – Focused on what works
- Context-Rooted – Centered in African realities

Submit your idea or article (600–800 words)
info@kmnala.co.za

Let’s build this platform together.

FINAL NOTES + STAY CONNECTED



“Leadership begins when we choose to act with purpose, not just power.” – KM Nala

HOW TO CONNECT

Let’s keep the conversation going:

Website: www.kmnala.co.za

LinkedIn: [KM Nala Advisory](#)

Email: info@kmnala.co.za



www.kmnala.co.za



Like what you read?

Share this issue, contribute your voice, or start a conversation with us at info@kmnala.co.za

